



ACCESSORY SETUP INSTRUCTION

GUARD, HEADLIGHT -- PN 6WWV-806300-5000

VALID FOR: MY2023 and Newer Ibex 800 S, Ibex 800 T


BEFORE YOU BEGIN: Read and understand the instructions before starting any work. Make sure that all parts are ready and that you have all the tools required for assembly.


NOTE: CFMOTO shall not be liable for any damage caused by incorrect assembly. CFMOTO recommends that all original accessories be assembled by an authorized CFMOTO dealer.

Before assembly, park the vehicle on a flat surface and turn off the key switch.

Zhejiang CFMOTO Power Co., Ltd. All rights reserved. Reproduction of this document, even in part, as well as copying of all kinds, is permitted only with the express written permission of the copyright owner.

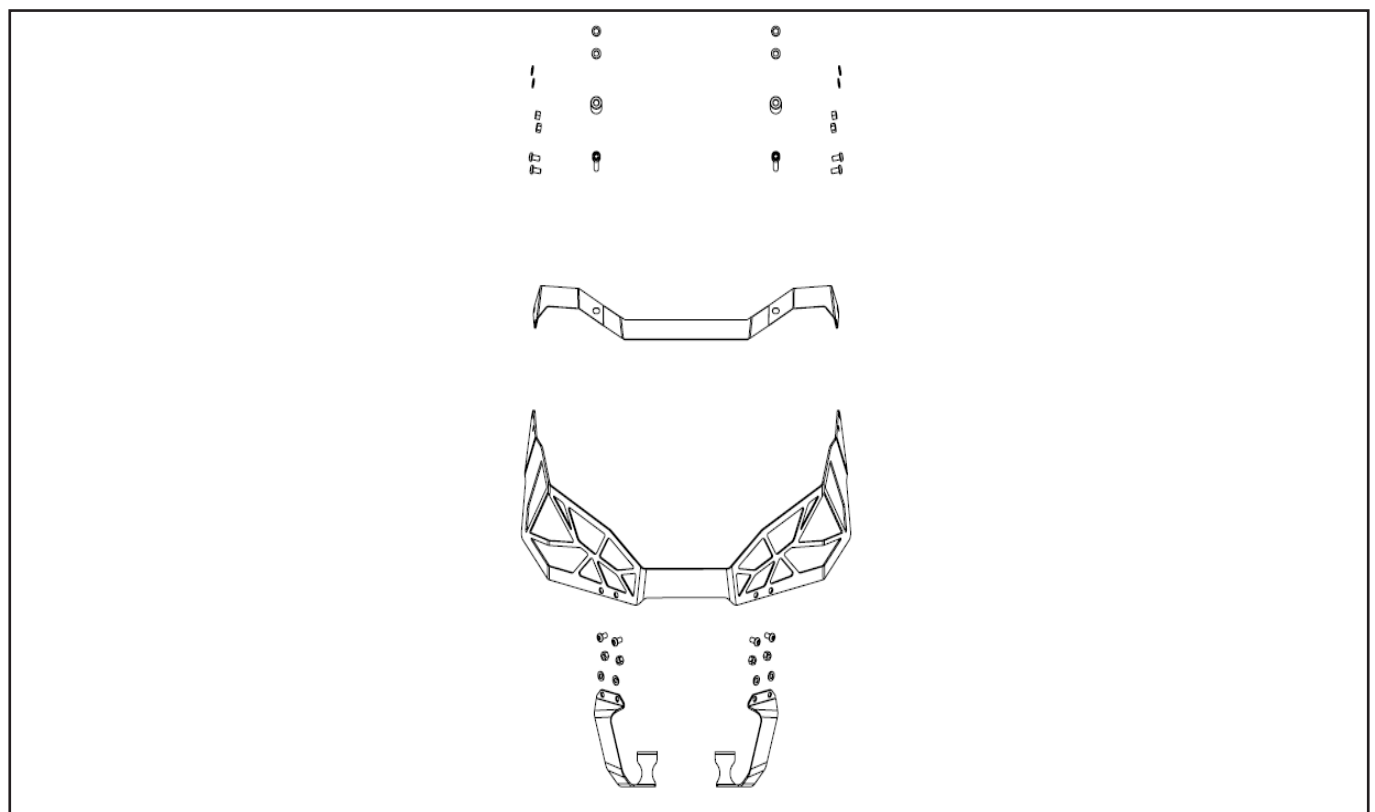
MEANING OF SYMBOLS

 - Indicates information with more details or tips.

 - Indicates information of warning or danger.

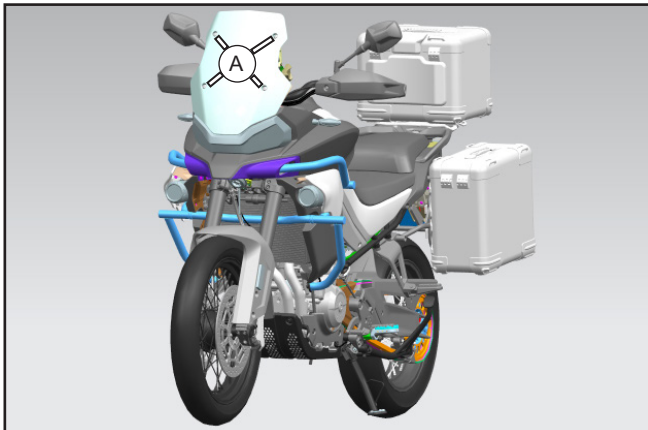
PARTS LIST:

ITEM	PART NAME	PART NUMBER	QTY.	REMARK
1	GUARD, HEADLIGHT		1	
2	UPPER BRACKET		1	
3	GUARD		1	
4	RH LOWER BRACKET		1	
5	LH LOWER BRACKET		1	
6	MOUNTING BUSHING	6WWV-806105-5000	2	
7	MOUNTING SCREW M5×10	6GUV-801700-6000-20	8	
8	MOUNTING NUT M5	6GUV-801700-6000-24	8	
9	MOUNTING SCREWS M6×35	6WWV-806100-5000-20	2	
10	GASKET M6	6WWV-806100-5000-22	2	
11	WASHER M6	6WWV-806100-5000-21	2	
12	WASHER M5	6GUV-803000-6000-22	8	

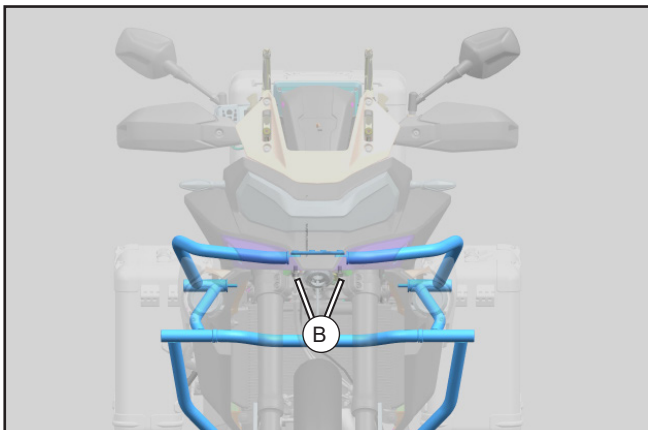


TOOL LIST:

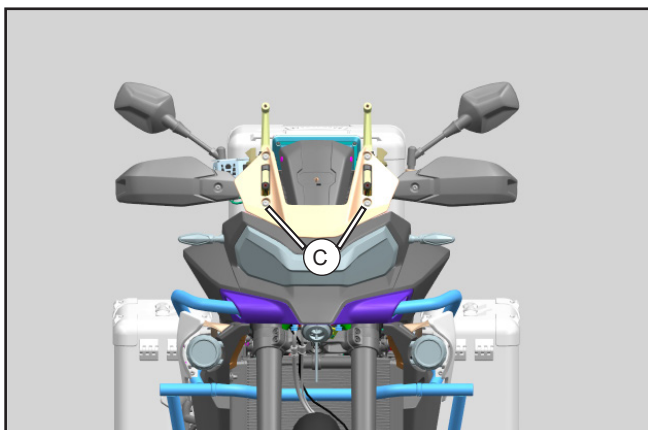
ITEM	DESCRIPTION	QTY.	REMARK
1	PROTECTIVE GLOVES	1	Recommended tools
2	3mm ALLEN WRENCH	1	
3	4mm ALLEN WRENCH	1	
4	13mm SOCKET	1	



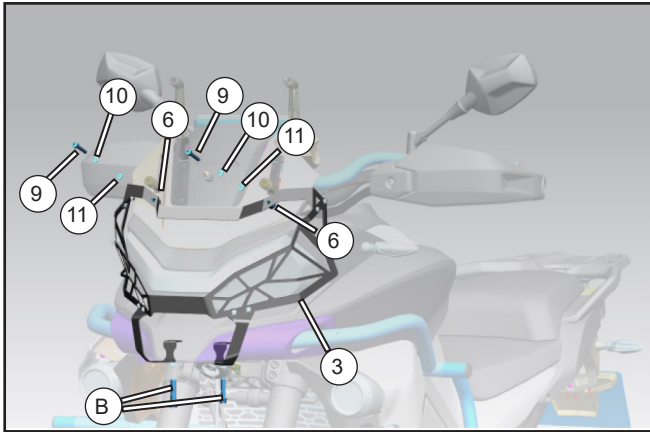
// Remove the screws fixing the windshield, remove the windshield (A).



// Remove the bumper bolts (B).

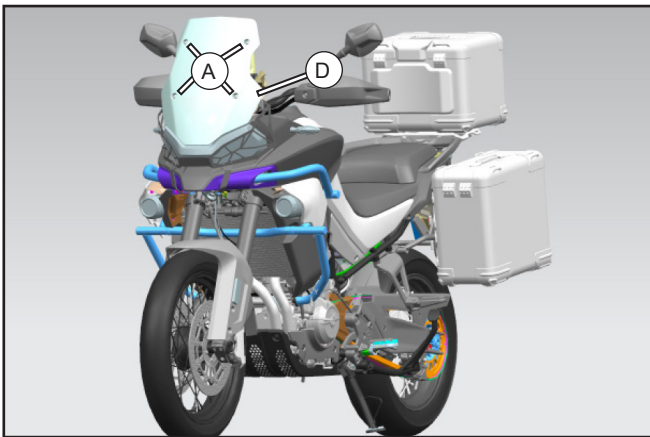


// Remove the screws (C) fixing the windshield bracket.



- // Place gaskets(10), washers (11) on screws (9). Then put the screws through the upper bracket mounting hole, place bushings (6) on screws. Align the screws (9) to the windshield bracket mounting holes. Do not fully tighten screws at this time.
- // Align the lower brackets mount to the bumper mounting holes, then install the bolts (B).
- // Tighten all bolts and screws.

i Place the lower bracket into the assembly position first.



- // Install windshield (D) and tighten with screws (A).