

ACCESSORY SETUP INSTRUCTIONS

REARSET, RH_TITANIUM, REARSET, RH_BLACK PN: 6AQV-802300-1000, 6AQV-802300-1000-10

VALID FOR: CF 450SR/SS

EXAMPLE SHOWN IS THE REARSET, LH_TITANIUM.

BEFORE YOU BEGIN: Read and understand the instructions before starting any work. Make sure that all parts are ready and that you have all the tools required for assembly.

NOTE: CFMOTO shall not be liable for any damage caused by incorrect assembly. CFMOTO recommends that all original accessories be assembled by an authorized CFMOTO dealer.

Before assembly, park the vehicle on a flat surface and turn off the vehicle.

Zhejiang CFMOTO Power Co., Ltd. All rights reserved. Reproduction of this document, even in part, as well as copying of all kinds, is permitted only with the express written permission of the copyright owner.

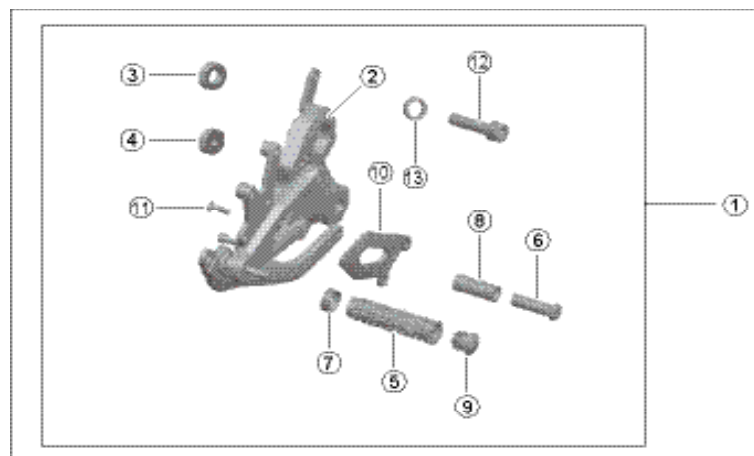
MEANING OF SYMBOLS

i - Indicates information with more details or tips.

! - Indicates information of warning or danger.

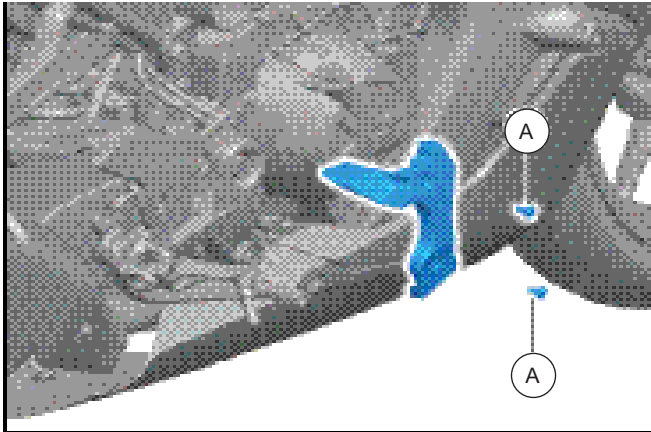
PART LIST:

S/N	PART NAME	PART NUMBER	QTY.	DESCRIPTION
1	REARSET, RH_TITANIUM	6AQV-802300-1000	1	Picture is for structure reference only.
2	REARSET BRACKET, RH_TITANIUM	6AQV-802310-1000	1	
3	UPPER MOUNTING BUSHING	6AQV-802201-1000	1	
4	LOWER MOUNTING BUSHING	6AQV-802202-1000	1	
5	PEDAL	6AQV-802203-1000	1	
6	BRAKE PEDAL	6AQV-802204-1000	1	
7	DECO COVER, PEDAL	6AQV-802205-1000	1	
8	RUBBER SLEEVE, BRAKE PEDAL	6AQV-802206-1000	1	
9	PLUG, FOOTREST	6AQV-802207-1000	1	
10	RH DECO PLATE	6AQV-802301-1000	1	
11	INNER HEX SCREW M6×20	6AQV-802200-1000-20	1	
12	INNER HEX SCREW M8×30	6AQV-802200-1000-22	1	
13	ALUMINUM GASKET	6AQV-802302-1000	1	

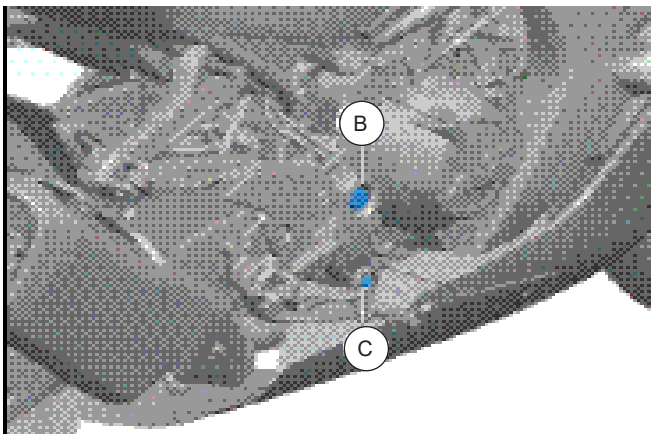


TOOL LIST:

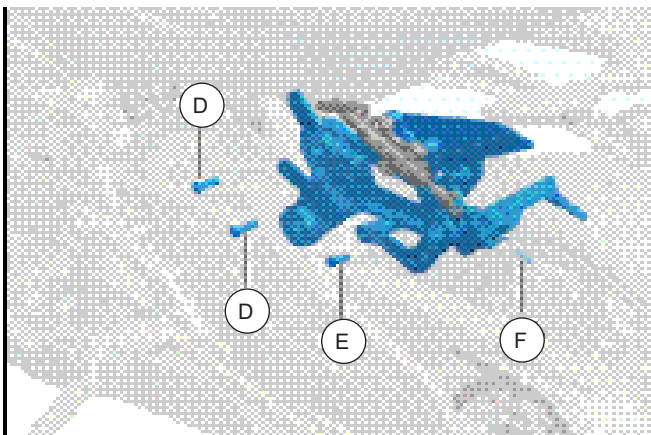
ITEM	DESCRIPTION	REMARK
1	M5, M6 INNER HEX WRENCHES	Recommended Tools
2	18mm, 19mm SOCKETS	
3	PROTECTIVE GLOVES	

WORK


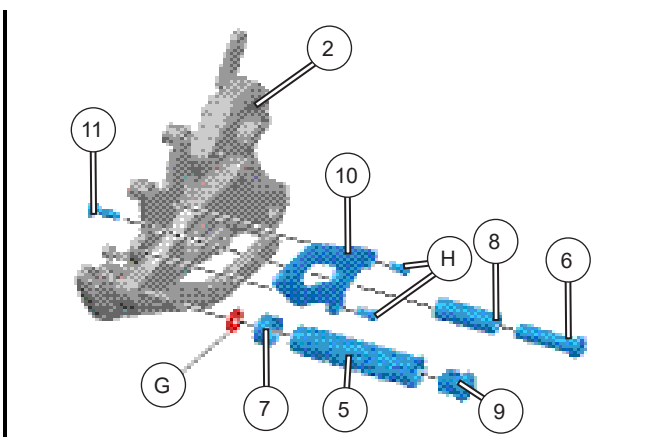
// Remove the bolts (A) for the anti-dust cap. Then remove the cap.



// Loosen bolt (C) and remove bolt (B). Then remove bolt (C).



// Remove the bolts (D), pin (E) and spring (F) to remove the original RH footrest.

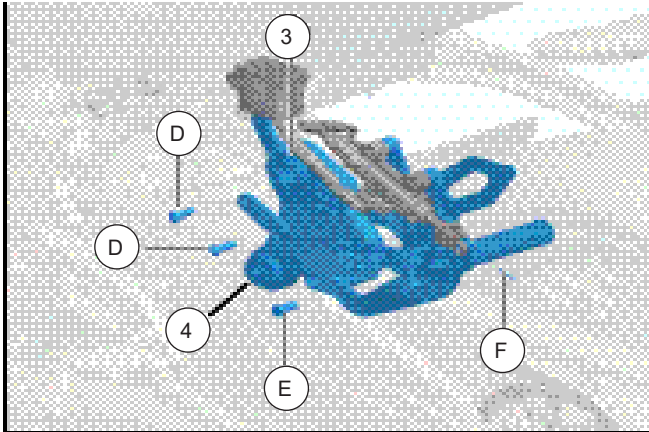


// On the RH rearsset bracket (2), remove the rubber limiter (G), and assemble the deco cover (7), pedal (5) and footrest plug (9) as shown.

// Install the RH deco plate (10) and two original bolts (H) on the RH rearsset bracket (2) as shown.

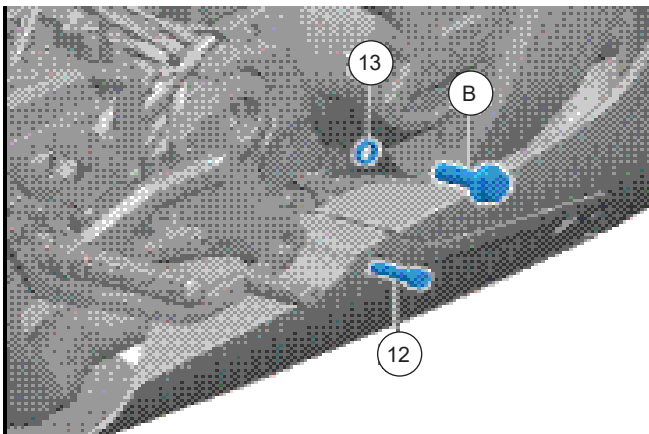
// Assemble the brake pedal (6), rubber sleeve (8) and the inner hex screw M6x20 (11) on the RH rearsset bracket (2) as shown.

i - Apply medium-strength threadlocker on bolts and screws.

WORK


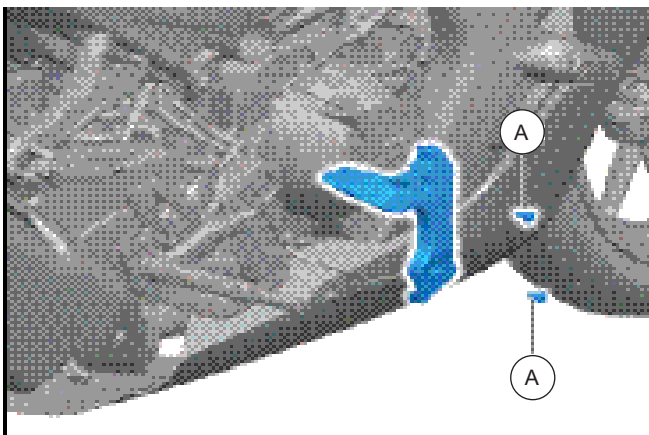
- // Assemble the rear brake master cylinder and RH rearset with original bolts (D), pin (E) and spring (F) as shown.
- // Position the upper mounting bushing (3) and lower mounting bushing (4) as shown.

i - Apply medium-strength threadlocker on bolts and screws.



- // Align the RH rearset with its installation holes.
- // Place the aluminum gasket (13) on the original bolt (B), and install this bolt in the upper mounting hole.
- // Install the inner hex screw M8x30 (12) in the lower mounting hole.

i - Apply medium-strength threadlocker on bolts and screws.
 - Clearance on left or right side of the original bolt determines the installation side of the aluminum gasket.



- // Install the anti-dust cap with its original bolts (A).
- // Assembly is complete.

i - Apply medium-strength threadlocker on bolts and screws.