

## ACCESSORY SETUP INSTRUCTIONS

REARSET, LH\_TITANIUM, REARSET, LH\_BLACK PN: 6AQV-802200-1000, 6AQV-802200-1000-10

VALID FOR: CF 450SR/SS

EXAMPLE SHOWN IS THE REARSET, LH\_TITANIUM.

**BEFORE YOU BEGIN:** Read and understand the instructions before starting any work. Make sure that all parts are ready and that you have all the tools required for assembly.

**NOTE:** CFMOTO shall not be liable for any damage caused by incorrect assembly. CFMOTO recommends that all original accessories be assembled by an authorized CFMOTO dealer.

Before assembly, park the vehicle on a flat surface and turn off the vehicle.

**Zhejiang CFMOTO Power Co., Ltd.** All rights reserved. Reproduction of this document, even in part, as well as copying of all kinds, is permitted only with the express written permission of the copyright owner.

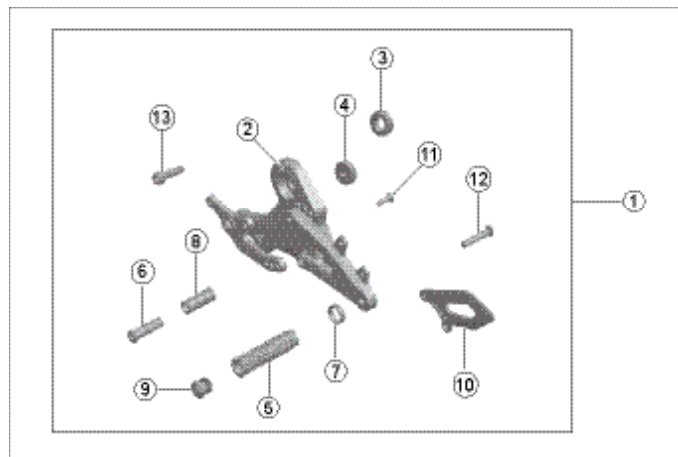
### MEANING OF SYMBOLS

 - Indicates information with more details or tips.

 - Indicates information of warning or danger.

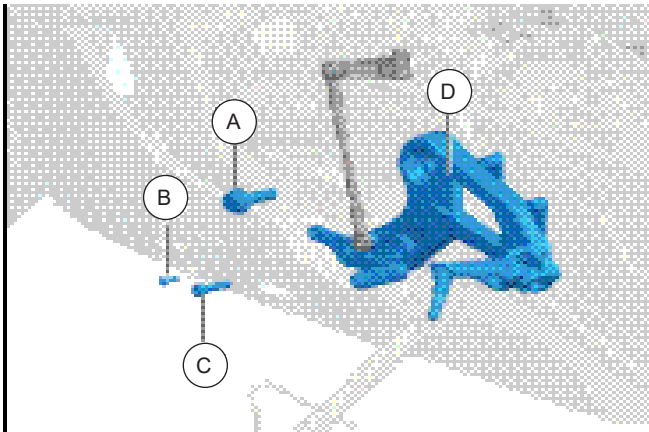
### PART LIST:

S/N	PART NAME	PART NUMBER	QTY.	DESCRIPTION
1	REARSET, LH_TITANIUM	6AQV-802200-1000	1	Picture is for structure reference only.
2	REARSET BRACKET, LH_TITANIUM	6AQV-802210-1000	1	
3	UPPER MOUNTING BUSHING	6AQV-802201-1000	1	
4	LOWER MOUNTING BUSHING	6AQV-802202-1000	1	
5	PEDAL	6AQV-802203-1000	1	
6	GEARSHIFT PEDAL	6AQV-802204-1000	1	
7	DECO COVER, PEDAL	6AQV-802205-1000	1	
8	RUBBER SLEEVE, GEARSHIFT PEDAL	6AQV-802206-1000	1	
9	PLUG, FOOTREST	6AQV-802207-1000	1	
10	LH DECO PLATE	6AQV-802208-1000	1	
11	INNER HEX SCREW M6×20	6AQV-802200-1000-20	1	
12	INNER HEX SCREW M8×40	6AQV-802200-1000-21	1	
13	INNER HEX SCREW M8×30	6AQV-802200-1000-22	1	

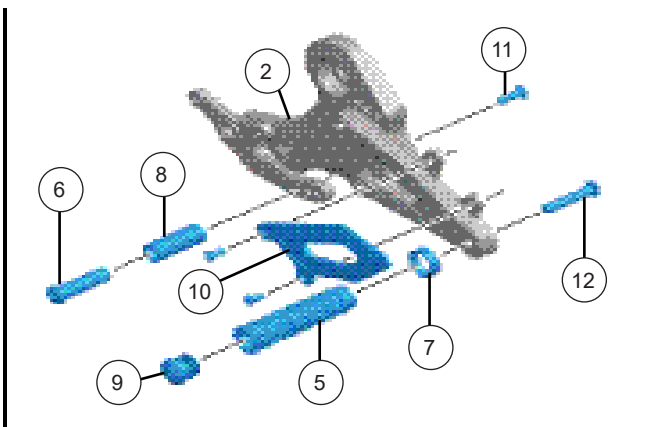


### TOOL LIST:

ITEM	DESCRIPTION	REMARK
1	M4, M5, M6 INNER HEX WRENCHES	Recommended Tools
2	18mm, 19mm SOCKETS	
3	PROTECTIVE GLOVES	

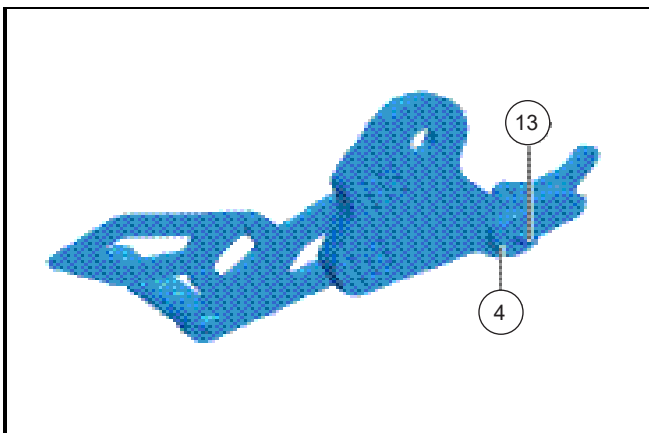
**WORK**


- // Remove bolt (B) and loosen bolt (A). Then remove bolt (C) and bolt (A).
- // Remove the LH pedal (D).

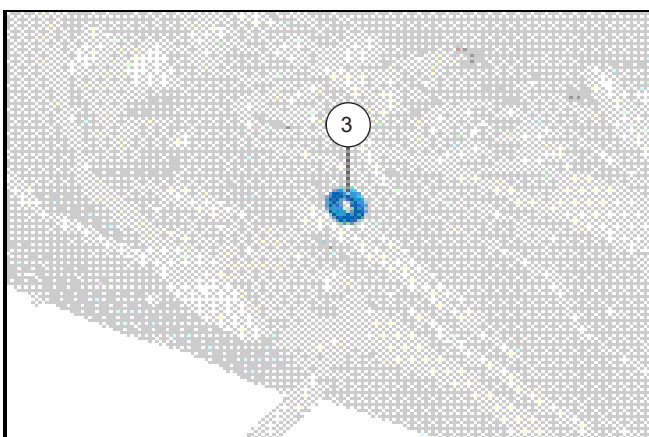


- // Assemble the gearshift pedal (6), rubber sleeve (8) and inner hex screw M6x20 (11) on the LH reaset bracket (2) as shown.
- // Assemble the inner hex screw M8x40 (12), pedal deco cover (7), pedal (5) and footrest plug (9) on the LH reaset bracket (2) as shown.
- // Assemble the LH deco plate (10) and other parts on the LH reaset bracket (2) as shown.

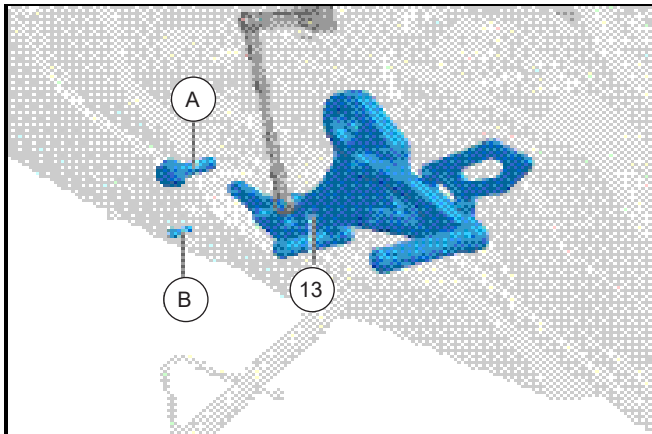
**i** - Apply medium-strength threadlocker on bolts and screws.



- // Install the lower mounting bushing (4) on the lower mounting hole of the LH reaset. Then insert the inner hex screw M8x30 (13) through the lower mounting hole.



- // Install the upper mounting bushing (3).

**WORK**

- // Align the LH rearset with its installation holes and pretighten the inner hex screw M8x30 (13).
- // Install and tighten original bolt (A). Then tighten the inner hex screw M8x30 (13).
- // Install and tighten original bolt (B).
- // Assembly is complete.

---

**i** - Apply medium-strength threadlocker on bolts and screws.